



جهاز التخطيط والإحصاء
Planning and Statistics Authority



INFOGRAPHIC OF WATER STATISTIC IN QATAR 2019

WWW.PSA.GOV.QA



[psa_qatar](https://twitter.com/psa_qatar)



[psa_qatar](https://www.instagram.com/psa_qatar)



[psaqa](https://www.facebook.com/psaqa)

RENEWABLE FRESHWATER RESOURCES

Precipitation (Million m3 per year)

- 83.4 DOHA INTERNATIONAL AIRPORT
- 92.9 Long-term annual average rainfall (1962-2019)

Renewable freshwater resources

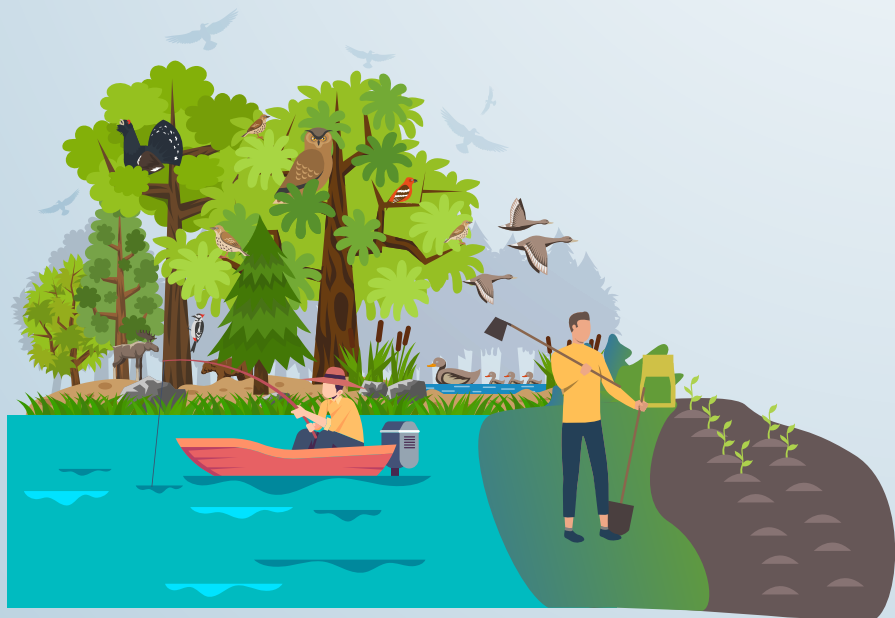
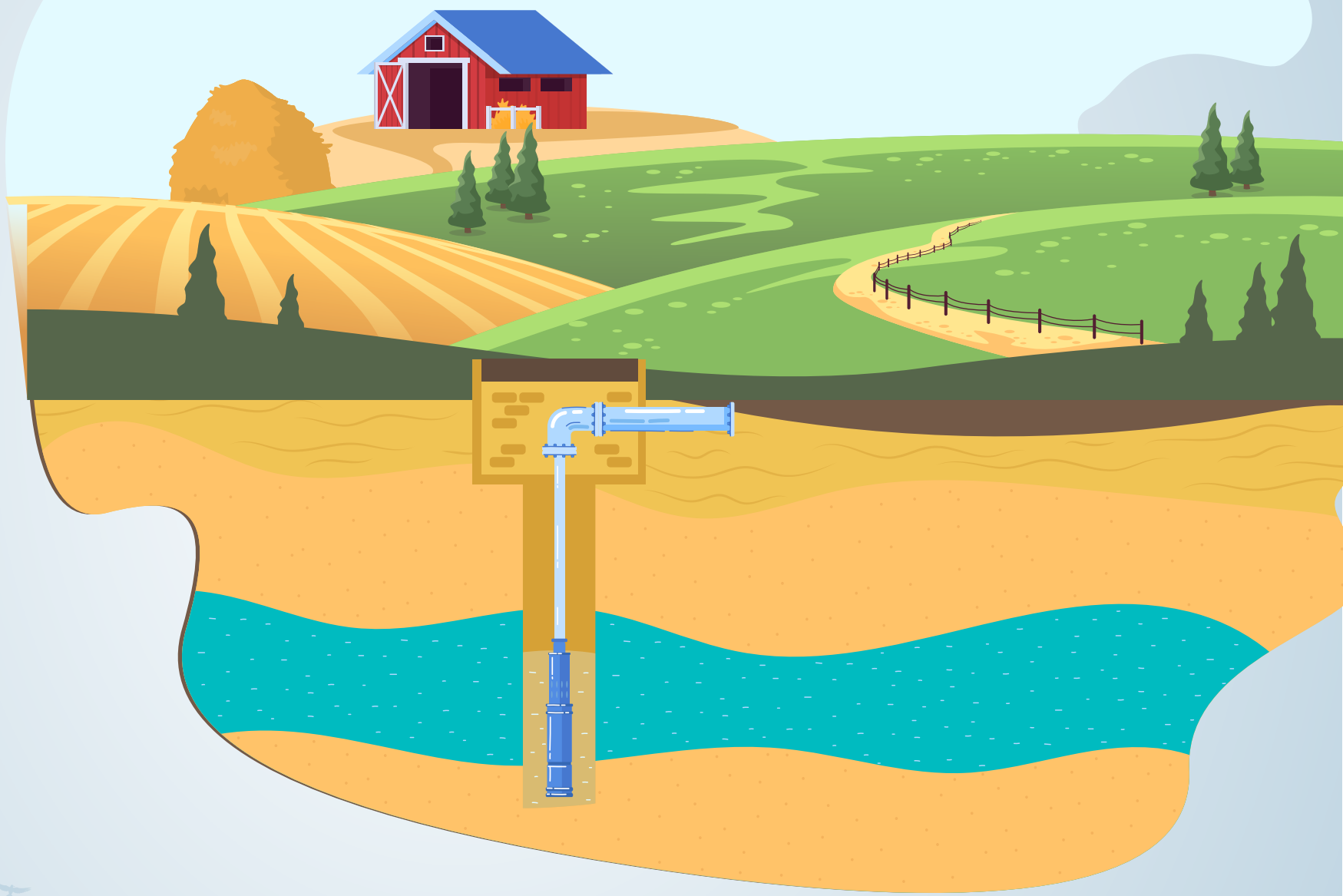
Water production (water available for use) (Million m3 per year)

- 637 Desalination of sea water
- 250.28 Fresh groundwater
- 150.88 Reuse of treated wastewater
- 24.51 Real Losses

FRESHWATER ABSTRACTION AND USE

250 (Million m³ per year)

Groundwater abstracted



230 (Million m³ per year)

**Agriculture, forestry and fishing
(ISIC 01-03)**



20 (Million m³ per year)

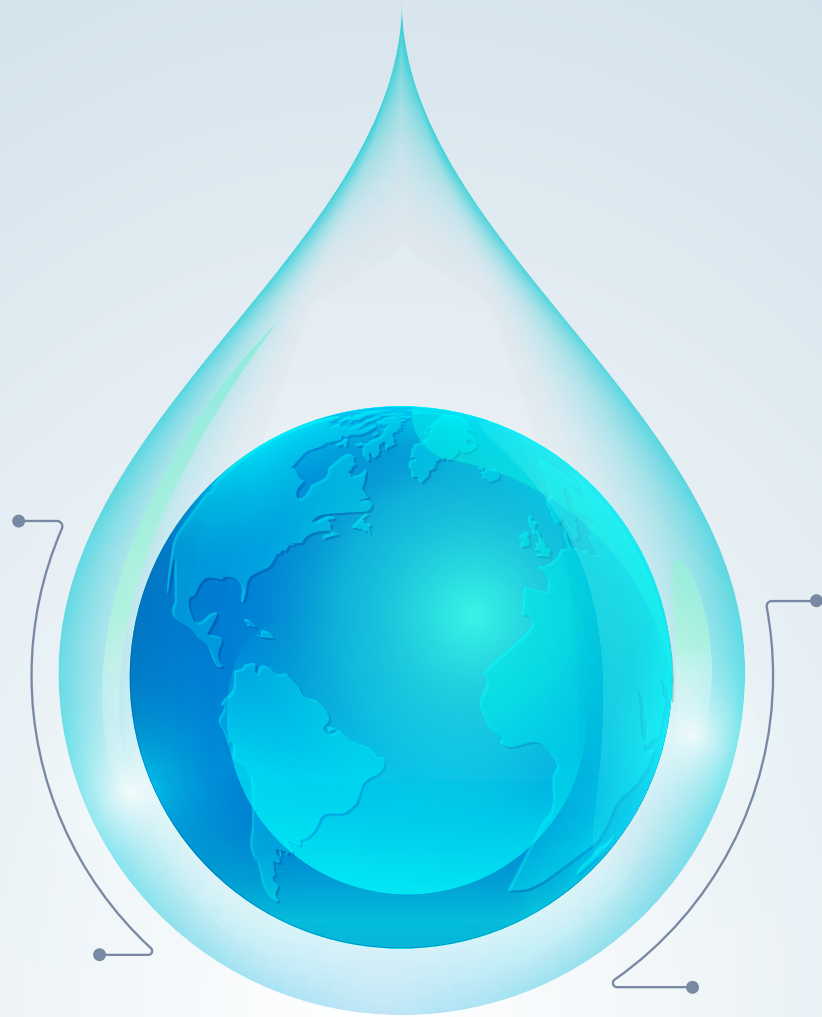
Other economic activities

WATER SUPPLY INDUSTRY (ISIC 36)



Gross water supplied by
water supply industry
(ISIC 36)

671

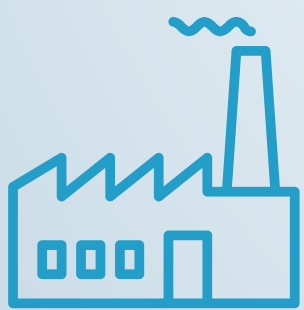


AVERAGE WATER PER CAPITA
CONSUMPTION Based On Autho-
rized Consumption of System
Input Volume, Net of Losses

219

(thousand m3 per year)

Proportion of population using safely managed drinking water services (Million m3 per year)



Industry

25.78



Commercial

25.80



Government

122.01



Domestic

266.00



Agriculture

309.97

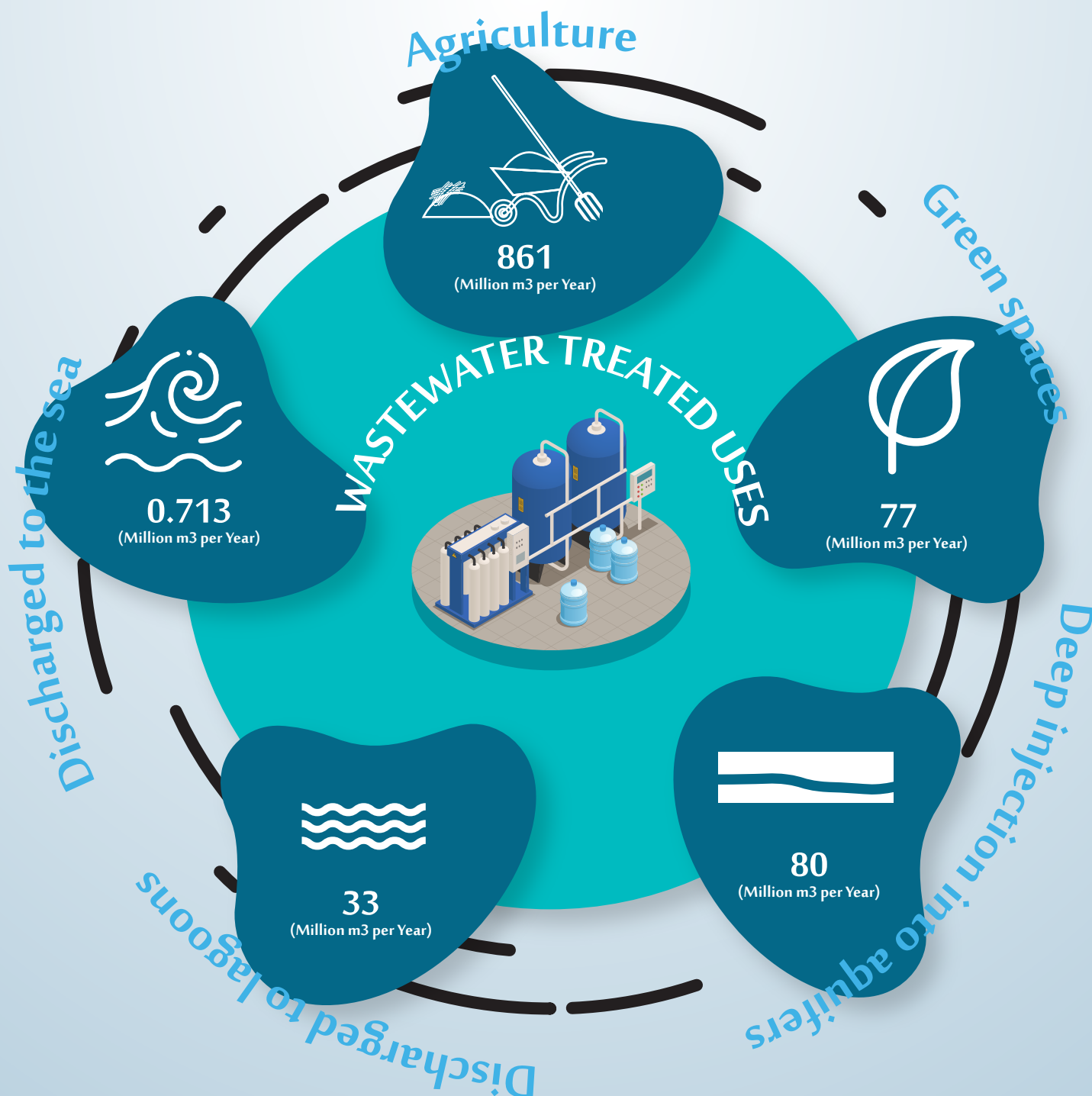
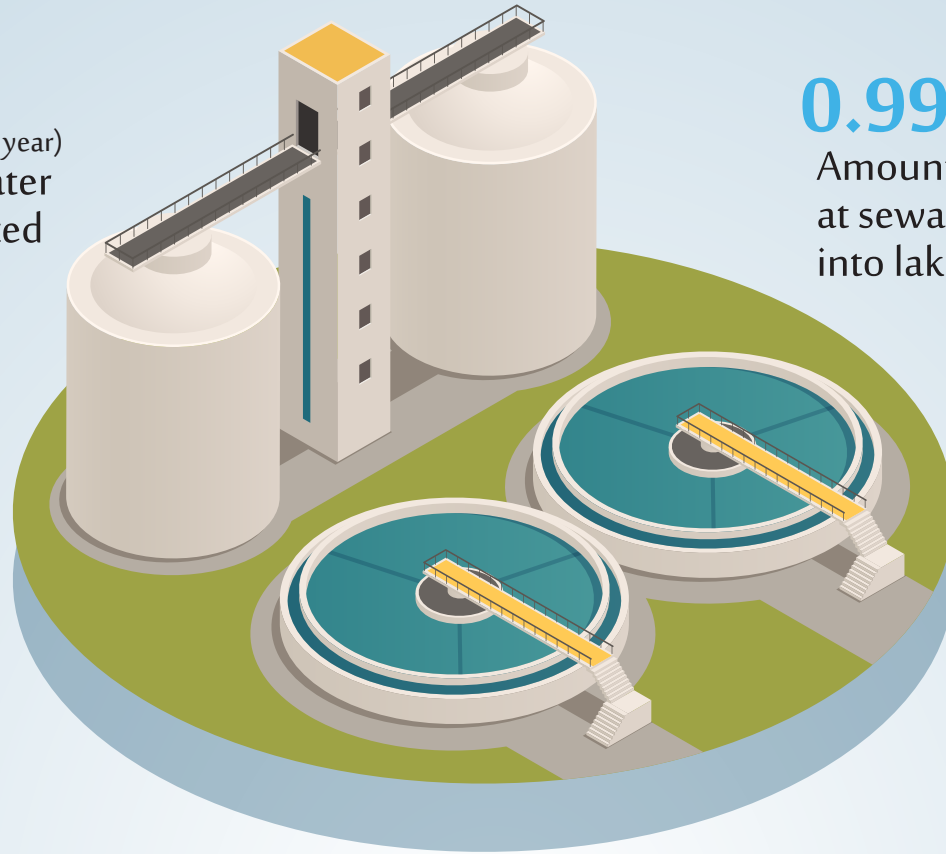
WASTEWATER GENERATION AND TREATMENT

278 (Million m3 per year)
Volume of wastewater collected

0.99 (Million m3 per year)
Amount of wastewater not collected at sewage plant and is discharged into lakes

276 (Million m3 per year)
Volume of wastewater treated

191
Sewage sludge production (1000 Ton)



WATER INFRASTRUCTURE



Number of stations



9

Desalination stations

7

Multi-Stage Flash Distillation (MSF)

117

Reservoirs

1

Reverse Osmose (RO)

1

Multiple effect distillation (MED)

Design Capacity of stations (thousand m3 per Day)

2067

Desalination stations

1348

Multi-Stage Flash 4 Distillation (MSF)

432

Reverse Osmose (RO)

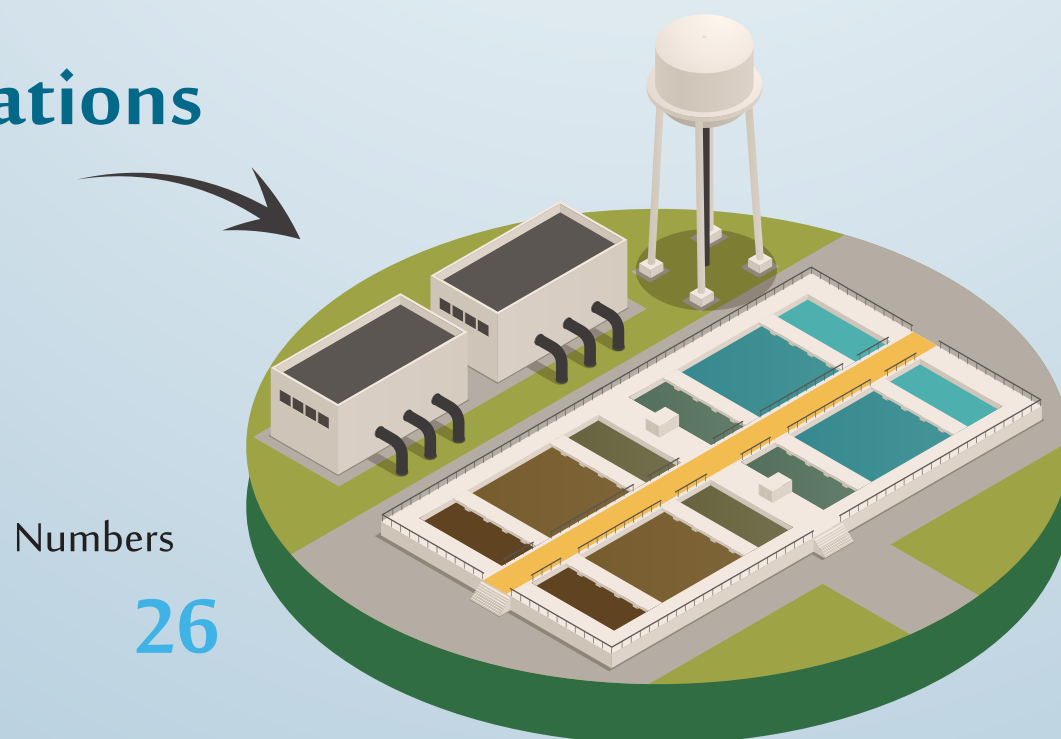
286

Multiple effect distillation (MED)

5.8

Reservoirs

WWTP stations



Numbers

26

Design Capacity

966 (thousand m3 per Day)

QUALITY OF DRINKING WATER



RESULTS OF BACTERIOLOGICAL TESTS OF DRINKING WATER SAMPLES (%)

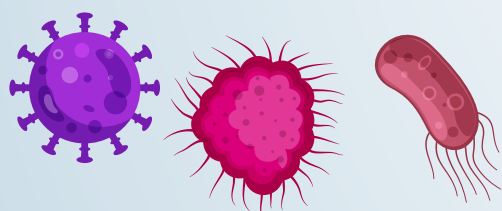
- 6.5 Public sources
- 13.5 Private sources
- 6.7 Total



RESULTS OF BACTERIOLOGICAL TESTS OF Bottled WATER SAMPLES (%)

- 1.2 Bacteriological
- 1.5 Chemical

RESULTS OF BACTERIOLOGICAL TESTS OF Desalination plant WATER SAMPLES



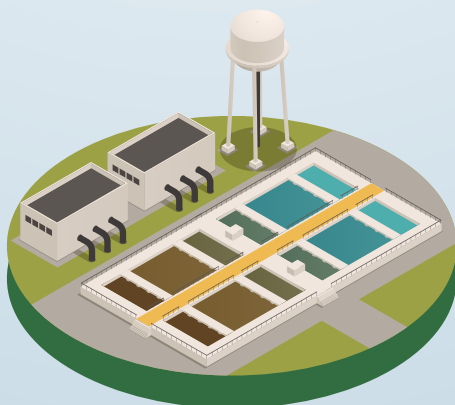
0 Bacteriological

2.2 Chemical



QUALITY OF TREATED WASTEWATER

0%



0%

RESULTS OF Detailed tests - fecal coliform

RESULTS OF Parasite Test (worms)

QUALITY OF MARINE WATER

<p>BOD</p> <p>0 Khawr Al'Udayd 1 Mesaieed 1 Al-Wakrah 1 Ras Abu Funtas 1 Doha 1 Al-Khor 1 Dakhirah 1 Ras Laffan 1 Ras Rakn 0 Dukhan 1 Salwa</p>	<p>Salinity (g/L)</p> <p>62.2 Khawr Al'Udayd 51.9 Mesaieed 48.8 Al-Wakrah 48.6 Ras Abu Funtas 44.5 Doha 47.9 Al-Khor 48.1 Dakhirah 47.6 Ras Laffan 48.9 Ras Rakn 62.5 Dukhan NM Salwa</p>	<p>Ph</p> <p>8.2 Khawr Al'Udayd 8.1 Mesaieed 8.3 Al-Wakrah 8.0 Ras Abu Funtas 7.8 Doha 8.2 Al-Khor 8.2 Dakhirah 8.2 Ras Laffan 8.2 Ras Rakn 8.2 Dukhan NM Salwa</p>	<p>Pb (µg/l)</p> <p>0.1 Khawr Al'Udayd 0.1 Mesaieed 0.1 Al-Wakrah 0.1 Ras Abu Funtas 0.1 Doha 0.1 Al-Khor 0.1 Dakhirah 0.1 Ras Laffan 0.1 Ras Rakn 0.1 Dukhan NM Salwa</p>
<p>Nitrite (NO₂) (mg/l)</p> <p>3.0 Khawr Al'Udayd 6.0 Mesaieed 2.9 Al-Wakrah 4.1 Ras Abu Funtas 5.4 Doha 6.1 Al-Khor 3.5 Dakhirah 4.5 Ras Laffan 3.8 Ras Rakn 4.0 Dukhan NM Salwa</p>	<p>Phosphate (PO₄) (mg/l)</p> <p>6.4 Khawr Al'Udayd 5.7 Mesaieed 3.9 Al-Wakrah 3.0 Ras Abu Funtas 8.3 Doha 7.6 Al-Khor 4.9 Dakhirah 7.9 Ras Laffan 9.1 Ras Rakn 5.8 Dukhan NM Salwa</p>	<p>Chlorophyll a (µg/l)</p> <p>0.3 Khawr Al'Udayd 1.0 Mesaieed 0.5 Al-Wakrah 0.2 Ras Abu Funtas 1.6 Doha 0.7 Al-Khor 0.4 Dakhirah 0.8 Ras Laffan 0.4 Ras Rakn 0.1 Dukhan NM Salwa</p>	



OIL SPILL INCIDENTS

- Number **68**
- AMOUNT OF SPILL M3 **77**

AMOUNT OF MARINE WASTE AND DEBRIS BY TYPE

- Wood waste **258 ton**
- Coastal waste **1638 ton**
- Total **1896 ton**



Area of Marine Protected Areas km2

- Al Thakhira **179.14**
- Khor Al Odaid **542.04**
- Total **721.18**

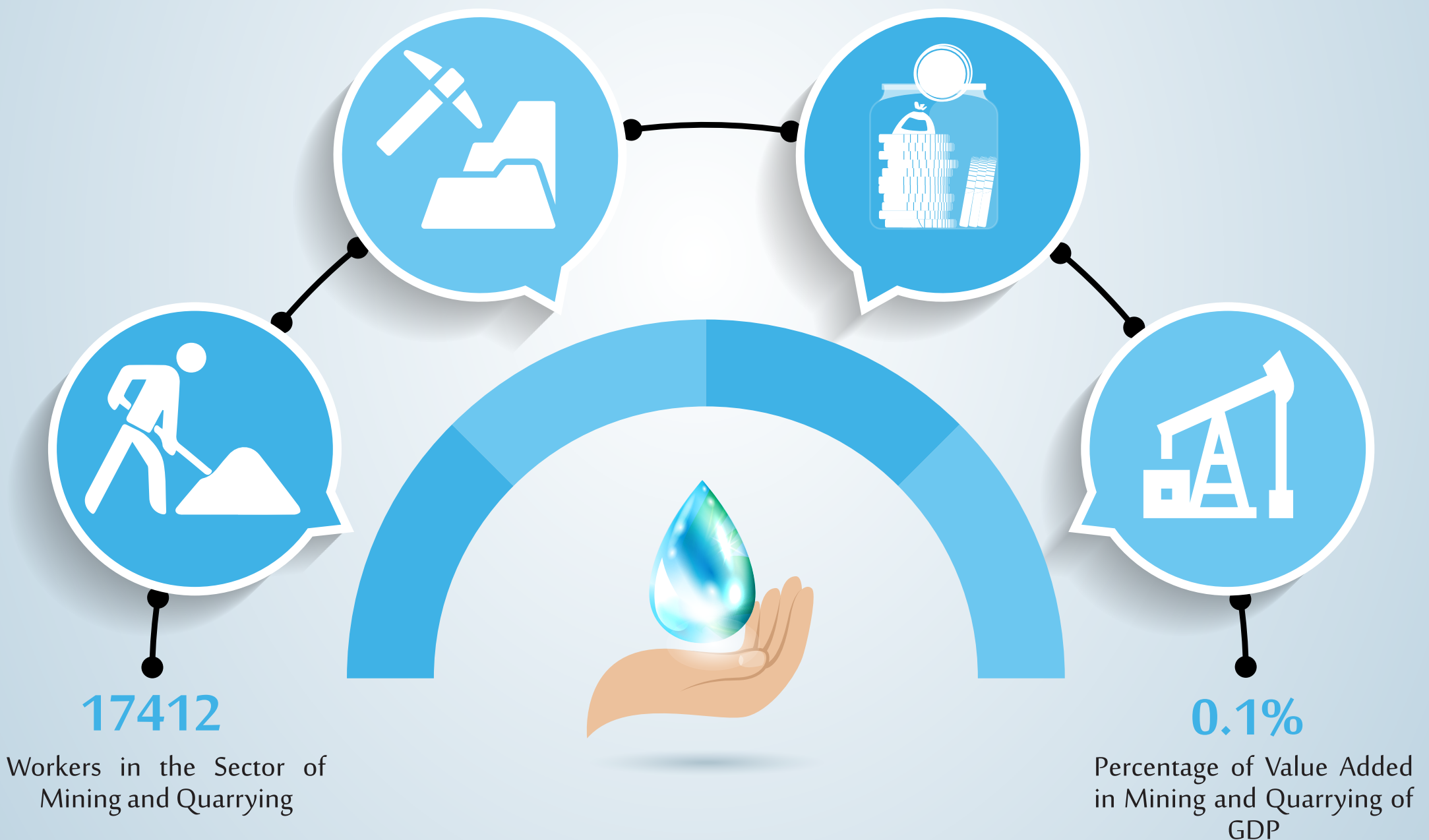
WATER ECONOMICS

0.8%

Percentage of Workers in the Sector of Mining and Quarrying of Total Labor Force

6161 Million QAR

Value Added in the Sector of Mining and Quarrying (crude oil and natural gas extraction, services related to oil and gas extraction without prospecting, other extraction)





جهاز التخطيط والإحصاء
Planning and Statistics Authority